




Public Health Information And Referral Services For Women, Children, And Families

A decorative banner consisting of a series of vertical rectangular segments in various colors: black, light green, grey, purple, yellow, and light purple.

Overview of Services 2016



Gundersen Health System Operates Two Hotlines For The State Of Wisconsin

- Maternal And Child Health Hotline
- Wisconsin First Step



Wisconsin First Step

1-800-642-7837

- Provides specialized Information and Referral on programs and services for children and youth ages birth to 21 with special needs, their families, and providers
- Primary components
 - To serve as the Central Directory for the Birth To 3 Program
 - To coordinate I&R efforts with Children and Youth With Special Health Care Needs (CYSHCN) Regional Centers



Wisconsin First Step

- Serves as a referral source
- Maintains resource database; makes it available to the centers; receives input from the regional centers
- Calls and Chats are answered 8 am – 4 pm Monday – Friday by a parent specialist, an information and referral professional who is also a parent of a child with special needs

Wisconsin First Step

■ Major Referral Areas:


- Advocacy
- Early Intervention
- Parent Support
- Respite Care
- Child Care Referrals
- Assistive Technology
- Parent Matching
- Financial Assistance
- Developmental Screening/Assessment
- Transition
- Home Based Services
- Transportation
- Medical Resources



New Behavioral Health Services

Wisconsin Public Health Hotlines On-Line Resource Directory

Welcome to Wisconsin Public Health Information and Referral Hotlines for Women, Children, and Families on-line database. To find resources throughout Wisconsin, enter information about the person needing assistance.

- ➔ **STEP 1:** Enter ZIP Code or Enter City (reset)
- ➔ **STEP 2:** Optional-Additional Information: Age Gender Female Male [Live Chat](#) 
- ➔ **STEP 3:** Choose a search below

or [\(click here\)](#)  to view a **Mental Health Resources Snapshot** for your county

Search by Service Categories

(Click a category to view available services.)

Children and Youth With Special Needs



Accessibility/
Home
Modifications



Education/
Transition



Financial Help



Health Care



Parent/ Family
Support



Public Benefits

Pregnant Women and Children/Women's Screenings



Financial Help



Health Care



Pregnancy and
Family Support



Public Benefits



Wisconsin Well
Woman Program

Behavioral Health/Mental Health for Children and Youth



Complementary/



Crisis Mental



Counseling &



Mental Health



Physician- Based



Support &

Search by Service Keyword

Search Hints

Type a word or phrase

(Examples: Prenatal Care, Autism Therapy, Child Development)

Partial Word

Search

Search by Agency or Program Name

Search Hints

Type a word or phrase

(Examples: Family Voices, Head Start, WIC)

Exact Phrase

Search

Service providers click this button to add or update your information in our database

Service Provider Tools

Wisconsin First Step now includes a comprehensive database of mental health resources for children and youth

Behavioral Health/Mental Health for Children and Youth

					
Complementary/ Alternative Crisis Mental Therapy	Health	Counseling & Therapy	Mental Health Screening & Assessment	Physician- Based Psychiatric Services	Support & Education For Families



Wisconsin Medical Home Systems Integration Project – Shared Resources Group

- Goal: to develop an online, statewide resource to serve families of children with behavioral health challenges, along with the clinicians and professionals supporting them
- Third year of the three-year grant project (August 2014 → August 2017)
- Statewide collaboration
- Special focus on behavioral health/mental health challenges and resources

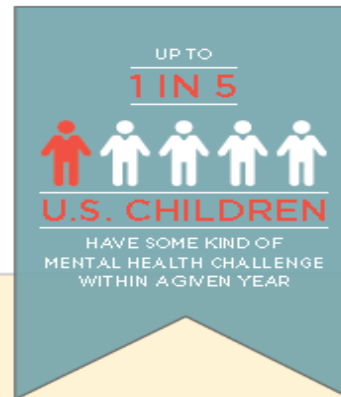
[One-page flyer](#)

[Postcard](#)




BEHAVIORAL HEALTH RESOURCES

FOR FAMILIES, YOUTH AND PROFESSIONALS



STEP 1: Visit www.mch-hotlines.org/home

STEP 2: Click on the  RESOURCE DIRECTORY

STEP 3: Search database for resources

FOR OPTIMAL SEARCH RESULTS, ENTERING A ZIP CODE IS KEY

EXPANDED CATEGORIES

Behavioral Health/Mental Health for Children and Youth



Alternative Therapies



Crisis Mental Health



Counseling/Therapy



Mental Health Screening & Assessment



Physician Based Psychiatric Services



Support & Education for Families

ALSO SEARCH BY COUNTY | LIVE CHAT | FREE 24/7 CALL-IN



Wisconsin First Step is funded in part by the Maternal and Child Health Title V Services Block Grant, Maternal and Child Health Bureau, Health Resources and Services Administration, U.S. Department of Health and Human Services, and the Wisconsin Birth To Three Program.

Partners contributing to Wisconsin First Step's expanded resources include: Children's Health Alliance of Wisconsin; Children's Hospital of Wisconsin; Chippewa County Health Department; Department of Children and Families, Division of Safety and Permanence, Bureau of Safety and Well-being; Department of Health Services' Children and Youth with Special Health Care Needs Program, Division of Mental Health and Substance Abuse Services, and Office of Children's Mental Health; Department of Public Instruction, Safe Schools Healthy Students; Family Voices of Wisconsin; Medical College of Wisconsin; Mental Health America of Wisconsin; National Alliance on Mental Illness of Wisconsin; United Way of Wisconsin; UW-Madison Waisman Center and Wisconsin Family Ties.





Thank You

We are interested in your ideas and your suggestions for enhancing the Public Health Hotlines:

- Mary Mundt Reckase, Director, (608) 775-6335
 - mmundtre@gundersenhealth.org
- Barbara McPeak, Referral Database Coordinator, (608) 775-6328
 - bjmcpeak@gundersenhealth.org
- Kim Knutson, Line Supervisor, (608) 775-1251
 - kdknutso@gundersenhealth.org